

1. Ensure the SD card is properly plugging in the socket (Fig. 1 and 2).

**Attention:**

SD card has to be plugged-in before power on.  
The SD card CAN NOT be initialized with hot plugging.



2. Connect the air tube.

3. Connect the power cord and turn on the instrument.



4. The blue LED lights up, right after the power switch is on (Fig. 3).

The blue LED keeps lighting up that means the initialization of the SD card is OK. If the blue LED goes out after 5s, please repeat the step 1 and 3.



Fig. 3

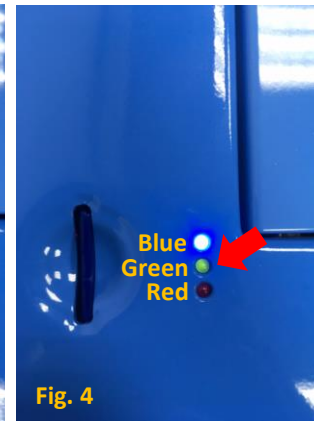


Fig. 4

5. Waiting 25s for the Wi-Fi initialization, and the green LED will start flashing (Fig. 4).  
The green flashing LED shows the instrument is successfully ready for Wi-Fi connection. If not, please repeat from the step 3.

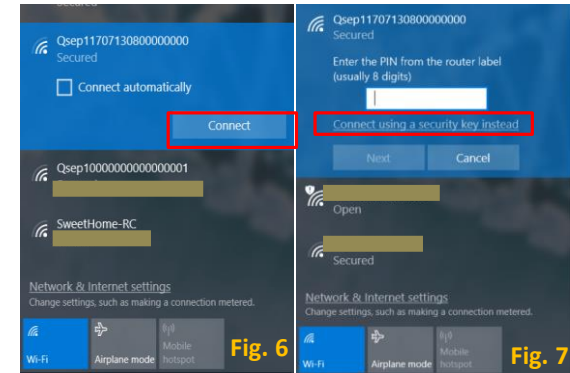
6. Check if the AP source is available from your Wi-Fi network in the computer (Fig. 5).



Fig. 5

7. Find the SSID named with "Qsep1+instrument ID (16 digits)" and click "Connect" (Fig. 6).

8. Click "Connect using a security key instead" (Fig. 7).



9. Enter the password:

The password is the serial number of instrument (16 digits) same as SSID name by blinding the prefixal "Qsep1" (Fig. 8).

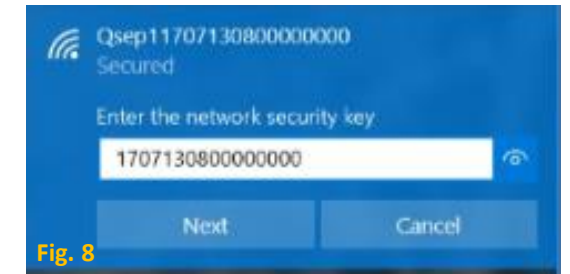


Fig. 8

If your computer can't find the SSID of Qsep1, please keep the distance between Qsep1 and the computer within 10 meter and try again from the step 3.

**Contact Information:**

Company Name: BiOptic Inc.

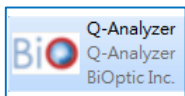
Address: (23141) 4F, No.108-3, Minquan Rd., Hsin-Tien District, New Taipei City, Taiwan

Tel: +886-2-2218-8726, Fax: +886-2-2218-8727, E-mail: info@bioptic.com.tw

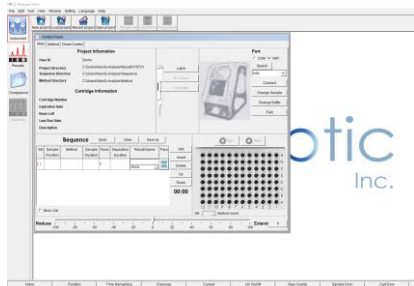
10. Check the LEDs status.



11. Double click the Q-Analyzer™.



12. Q-Analyzer™ user interface:



12-1. Select WIFI mode (Fig. 1).

12-2. Click "Search" (Fig. 2) and Instrument ID will display (Fig. 3).

12-3. Click Connect (Fig. 3).

12-4. The image will switch to Qsep1 when it is connected.



Fig. 1

Fig. 2

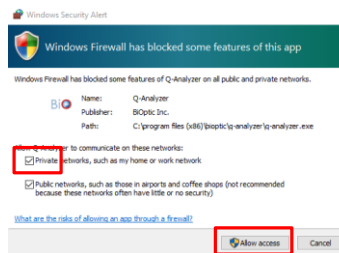


Fig. 4

Fig. 3

## Attention:

Check "Private" and "Allow access" (if Windows Security Alert shows up).



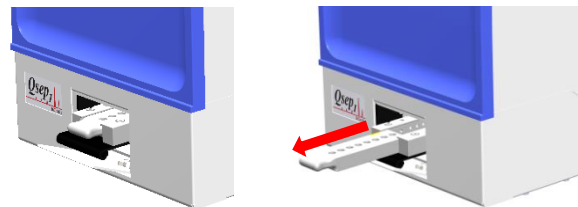
## Reagent preparation

### Item list of the Cartridge pack:

- Cartridge
- Alignment maker
- Mineral oil
- Dilution buffer
- Separation buffer
- Buffer tray
- Drops
- Tubes for Alignment Marker



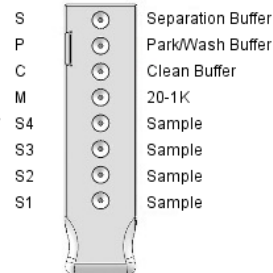
13-1. Click "Change Sample" and the sample door will be opened automatically.



13-2. Remove the security tape and slide out the sample tray.

13-3. Buffer and sample allocate into 200µl PCR vials and place to the sample tray according the position.

- S: 200µl of Separation Buffer
- P: 50µl of distilled water
- C: 200µl of distilled water



### Contact Information:

Company Name: BiOptic Inc.

Address: (23141) 4F, No.108-3, Minquan Rd., Hsin-Tien District, New Taipei City, Taiwan

Tel: +886-2-2218-8726, Fax: +886-2-2218-8727, E-mail: info@bioptic.com.tw

M: >20µl of alignment marker

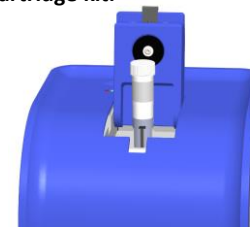
L: >20µl of size marker

S1~ S4: >20µl of sample

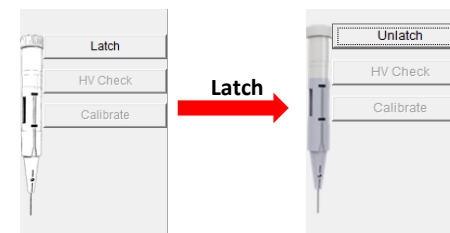
14. Slide the buffer tray into the instrument all the way in.

15. Open the cartridge door and insert cartridge (Guiding groove facing front).

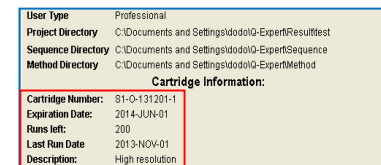
Note: Please refer to unpacking guide which comes with cartridge kit.



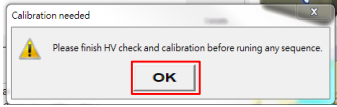
16. Close the cartridge door, and click "Latch".



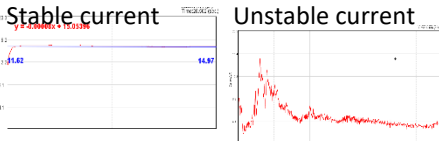
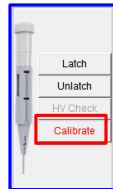
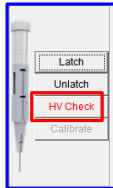
The cartridge information will display after latched.



**17. First Use Cartridge Calibration:**  
New cartridge need to be calibrated before use.  
Please proceed with the following steps.



**17-1. Click "HV Check".**  
Check current and see if stable or not.  
After HV check, if current is still unstable,  
please repeat this step 2-3 times.



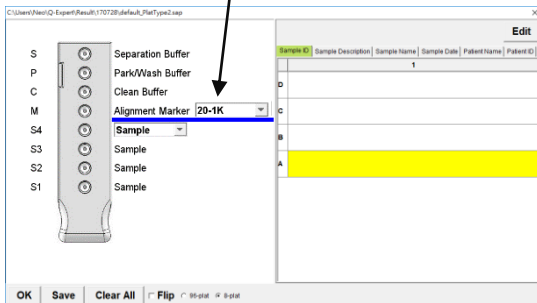
**17-2. Click "Calibrate".**  
Note: the "Calibrate" button will only  
display after HV check passed.

\* For trouble shooting, please refer to operation manual  
for details.

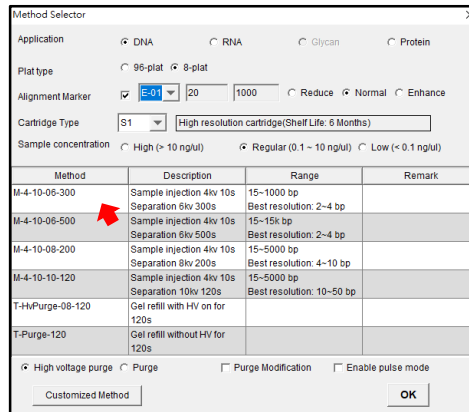
**18. In the sequence session, select the sample  
position and complete the settings.**

SN	Sample Position	Method	Sample Duration	Runs	Separation Duration	Result Name	Para
1	A-01	M-4-10-06-3...	10	1	300	0001	None

**19-1. Click "Sample Position" and choose the position of  
your samples. Select the alignment marker  
accordingly.**



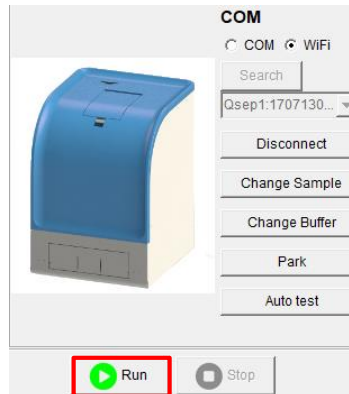
**19-2. Click on "Method" to select a proper method for your  
application.**



**19-3. Click on "Result Name" and type the name of result files.**

SN	Sample Position	Method	Sample Duration	Runs	Separation Duration	Result Name	Para
1	A-01	M-4-10-06-3...	10	1	300	0001	None

**20. Click "Run" to start the test.**



**Contact Information:**

**Company Name:** BiOptic Inc.

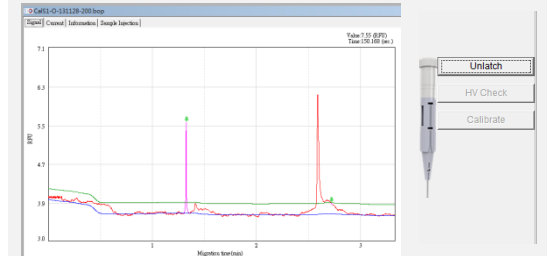
**Address:** (23141) 4F, No.108-3, Minquan Rd., Hsin-Tien District, New Taipei City, Taiwan

**Tel:** +886-2-2218-8726, **Fax:** +886-2-2218-8727, **E-mail:** info@bioptic.com.tw

**Notification- Calibration criteria**

**The Alignment Marker (20&1k) must locate in  
correct position (M position).**

**The calibration will be passed only when two  
peaks are recognized, and the signal strength must  
be above minimum S/N.**



**Real time chart:**

